

MATERIAL SPECIFICATIONS		
COMPONENT	MATERIAL	OPTIONS
SWIVEL	LP/MP-BRASS (1/4" - 1/2") HP- ZINC PLATED STEEL	STAINLESS STEEL (ALL)
SEALS	NITRILE	VITON, EPDM, FOOD GRADE
REEL	STEEL	-
BEARINGS	BRONZE, SELF LUBE	-
BALL STOP	RUBBER	STAINLESS HARDWARE
LOCKING PAWL	STAINLESS STEEL	BRONZE (NON-SPARK) (N)
SLIP RING	115V	300V BARE REEL
COVER	STEEL (BLACK)	
FINISH	BLUE POWDER COAT (B)	RED(R), GREEN(N), WHITE(W), BLACK (WRINKLE(C)/GLOSS(K)), GREY(G) STAINLESS POLISHED (SS)

**PART NUMBER**

CORD LENGTH (IN FT.)      ACCESSORY (SEE PAGE 2)      OPTIONS:  
 C= CONSTANT TENSION  
 T= 10' INPUT CORD

**C - L 350 - 50 XX - X - \* - \* \* - XXX**

AWG SIZE: 12      HOSE      FLUID PASSAGE  
 10      MOUNTING: X= FLOOR/CEILING      IF BOX, SUFFIX NOT REQUIRED  
                          W= WALL      B= BOTTOM/ TRUCK      D= DOWN      \* = OMIT IF OPTION IS UNUSED

**UNLISTED OPTIONS & CUSTOM REELS**  
 NOT ALL OPTIONS ARE LISTED. CONTACT YOUR SALES REPRESENTATIVE OR FACTORY FOR ADDITIONAL OPTIONS & CUSTOM MODIFICATIONS

**COXREELS**  
 5865 S Ash Avenue      Tempe, Az 85283  
 1-800-COX-REEL      www.coxreels.com

THIS DOCUMENT CONTAINS PROPRIETARY INFORMATION AND IS THE PROPERTY OF COXREELS, INC. THE COPYING, DISTRIBUTION AND UTILIZATION OF THIS DOCUMENT AS WELL AS COMMUNICATION OF ITS CONTENT TO OTHERS WITHOUT THE WRITTEN AUTHORIZATION OF COXREELS, INC., IS PROHIBITED.

TITLE: **C SERIES (POWER AND AIR)**

DWG. NO.: **C SERIES (AIR POWER)**      REV. -

3RD ANGLE      INTERPERT PER ASME : Y14.5M-1994      SIZE: A  
 DO NOT SCALE DWG.      SHT:1 OF: 2

**STANDARD HOSES:**

TYPE	SIZE	COLOR	COVER	TUBE	REINFORCEMENT	PRESSURE	TEMP RANGE
LP	1/4" TO 1/2"	RED	PVC	PVC	YARN	300 PSI	-15 TO +150 F
MP	3/8"	BLACK	SYNTHETIC RUBBER	POLYESTER	1 BRAID STEEL WIRE	3000 PSI	-40 TO +250 F
MP	1/2"	BLACK	SYNTHETIC RUBBER	POLYESTER	1 BRAID STEEL WIRE	2500 PSI	-40 TO +250 F
HP	1/4"	BLACK	SYNTHETIC RUBBER	POLYESTER	2 BRAID STEEL WIRE	5000 PSI	-40 TO +250 F
HP	3/8"	BLACK	SYNTHETIC RUBBER	POLYESTER	2 BRAID STEEL WIRE	4000 PSI	-40 TO +250 F

**OPTIONAL HOSES (LP ONLY):**

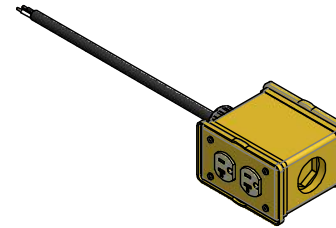
SUFFIX	SIZE	COLOR	COVER	TUBE	REINFORCEMENT	PRESSURE	TEMP RANGE
OG	1/4" TO 1/2"	BLACK	NEOPRENE	NITRILE	2 TEXTILE SPIRAL	300 PSI	-20 TO +212 F
RH	1/4" TO 1/2"	RED	EPDM	EPDM	2 TEXTILE SPIRAL	300 PSI	-40 TO +212 F
BH	1/4" TO 1/2"	BLACK	EPDM	EPDM	2 TEXTILE SPIRAL	300 PSI	-40 TO +212 F
BP	1/4" TO 1/2"	BLUE	PVC	PVC	YARN	300 PSI	-15 TO +150 F
YP	1/4" TO 1/2"	YELLOW	PVC	PVC	YARN	300 PSI	-15 TO +150 F

**PC REEL DATA**

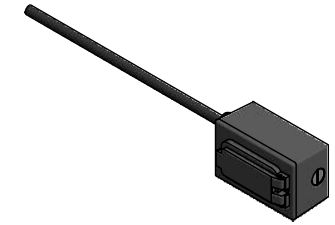
MODEL	ACCESSORY	GAUGE	AMPS
-5016-A	SINGLE RECEPTICLE	16	13
-5012-A	SINGLE RECEPTICLE	12	20
-5012-B	4-PLUG RECEPTICLE	12	20
-5016-C	FLOURESCENT INDUSTRIAL LIGHT	16	.3
-5016-D	FLOURESCENT ANGLE W/ PLUG	16	13
-5016-E	BULB LIGHT W/ CAGE	16	13
-5016-F	GFCI 2 PLUG RECEPT	16	13
-5012-F	GFCI 2 PLUG RECEPT	12	20
-5012-X	WITH CORD (SJO), NO ACCESS	12	20
-5016	NO CORD	16	13
-5012	NO CORD	12	20



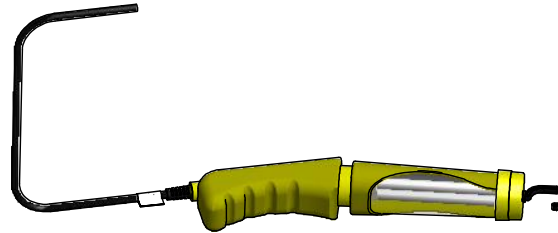
**SINGLE RECEPTICLE (-A)  
SJO CORD**



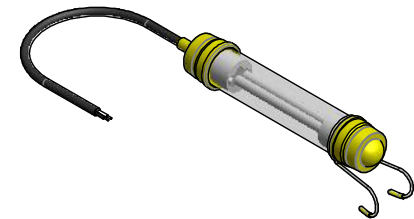
**QUAD INDUSTRIAL  
RECEPTICLE (-B)  
SJO CORD**



**DUPLEX METAL GFCI (-F)  
SJO CORD**

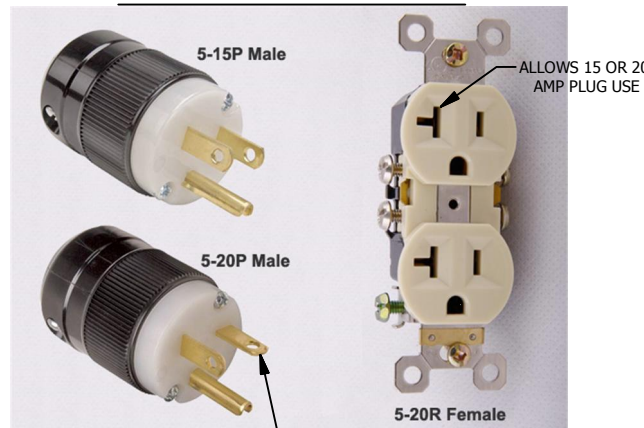


**FLOURESCENT ANGLE LIGHT  
SINGLE RECEPTICLE IN HANDLE (-D)**  
13w, 2-PIN, 120 Vac FL-TYPE BULB  
SJTO CORD

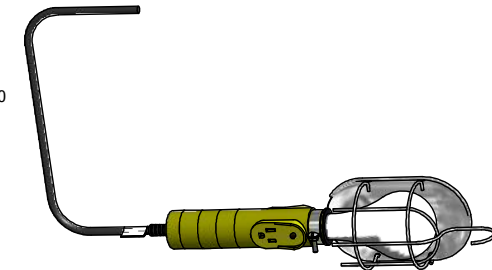


**FLOURESCENT TUBE LIGHT  
SHOCK/ SHATTER RESISTANT (-C)**  
120 VAC, .3 AMP, BULB- PL13CW  
SJTO CORD

**NEMA RECEPTACLES:**



NOTE: 90 DEGREE  
ROTATION



**INCANDESCENT CAGED DROP LIGHT  
WITH SINGLE RECEPTICLE (-E)**  
100W OR SMALLER BULB, CUSTOMER SUPPLIED  
SJTO CORD

**COXREELS**  
5865 S Ash Avenue Tempe, Az 85283  
1-800-COX-REEL www.coxreels.com  
THIS DOCUMENT CONTAINS PROPRIETARY INFORMATION AND IS THE PROPERTY OF COXREELS, INC. THE COPYING, DISTRIBUTION AND UTILIZATION OF THIS DOCUMENT AS WELL AS COMMUNICATION OF ITS CONTENT TO OTHERS WITHOUT THE WRITTEN AUTHORIZATION OF COXREELS, INC., IS PROHIBITED.

TITLE: <b>C SERIES (POWER AND AIR)</b>		
DWG. NO.:	<b>C SERIES (AIR_POWER)</b>	REV. -
3RD ANGLE	INTERPERT PER ASME : Y14.5M-1994 DO NOT SCALE DWG.	SIZE: A SHT:2 OF: 2